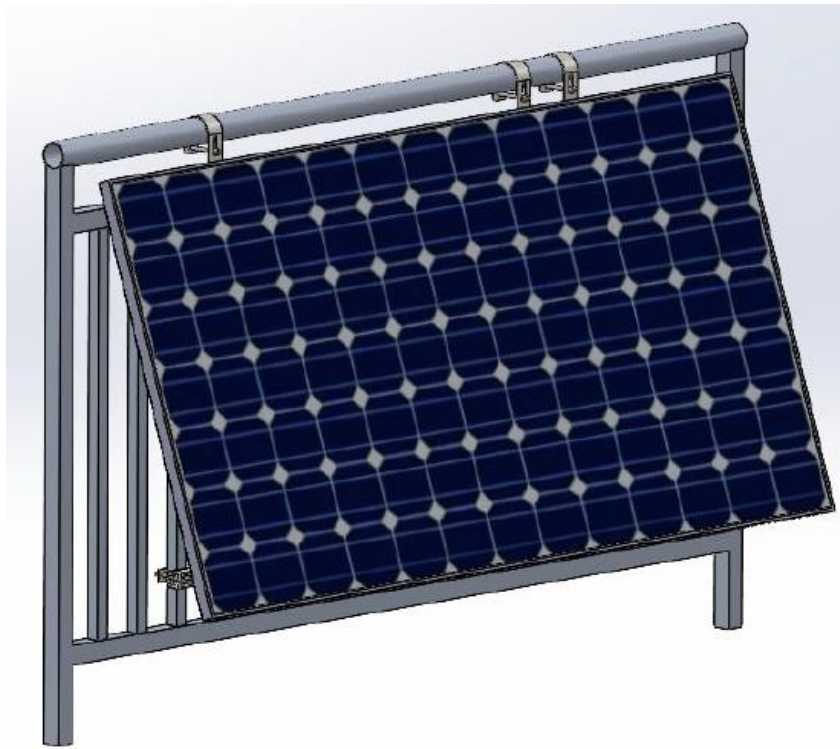




BALCONY BRACKET SET FOR BALCONY POWER PLANT

Article-No.: 23198

- ASSEMBLY- AND USER MANUARL -



***Installation-videos and further instructions
for our products can be found on
the respective page of our website***

***Further products for your office, house and garden
can be found on
www.jet-line.de***

TABLE OF CONTENTS

PRODUCT-INTRODUCTION **Page 2**

PART-LIST **Page 3**

REQUIRED TOOLS AND ACCESSORIES **Page 4**

ASSEMBLY-INSTRUCTION **Page 5-10**

- 1. Installation of the rails **Page 5**
- 2. Installation of the adjustable feet **Page 6**
- 3. Installation of the hooks on the panel **Page 6-7**
- 4. Attachment to the balcony rail **Page 8-9**
- 5. Installation of the inverter **Page 9-10**
- 6. Finishing installation **Page 10**

INSTALLATION PRECAUTION NOTE **Page 11**

PRODUCT-INTRODUCTION









The balcony guardrail photovoltaic system has a unique installation method. The adjustable rod can meet various angle adjustments. The specific assembly bracket not only ensures the overall stability of the system, but also improves the convenience of installation. High-quality design components and a small number of accessories make it an efficient solution for small projects.

Before installation, please read the entire manual carefully!

PART-LIST

| No. | Drawing | Description | Qty. |
|-----|---|---|------|
| A |  | Inner Tube | 2 |
| B |  | Outer Tube | 2 |
| C |  | Base | 2 |
| D |  | Fixer | 2 |
| E |  | Hook | 2 |
| F |  | Rail | 2 |
| G |  | Adjustable foot pre-assembled from A, B, C, D | 2 |
| H |  | Bracket-Set pre-assembled | 2 |
| I |  | Fixer Set pre-assembled | 4 |

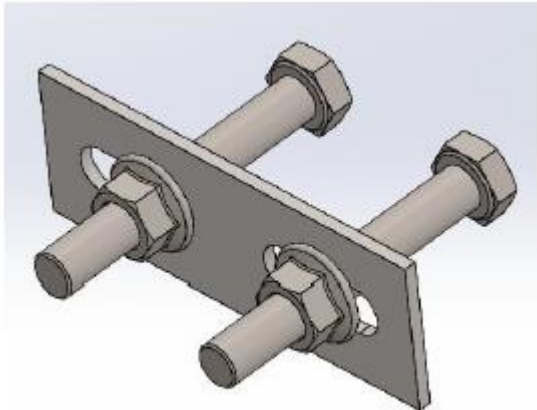
REQUIRED TOOLS AND ACCESSORIES

| No. | Drawing | Description |
|-----|---|-------------------------|
| A |  | Allen Wrench 6 mm |
| B |  | Electrical Tool |
| C |  | Tape Measure |
| D |  | Marker Pen |
| E |  | Torque Wrench |
| F |  | String |
| G |  | Adjustable Wrench |
| H |  | Socket Wrench M10/M8 |

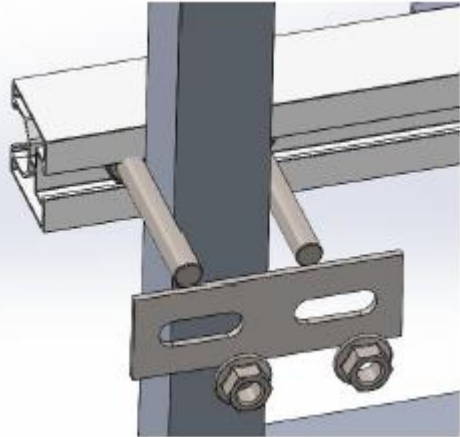
ASSEMBLY INSTRUCTION

STEP 1

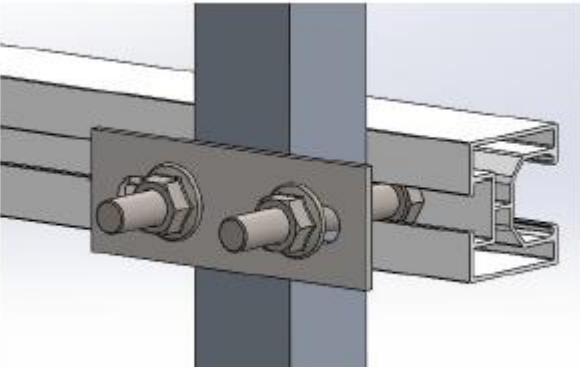
Installation of the rails (F)



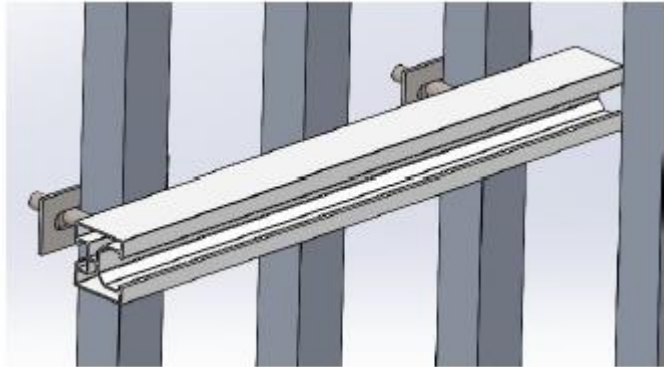
Remove the nut from the bolt in the Fixer-Set (I)



Slide the bolt heads into the groove of the cross-bar (F); with one bolt on each side of the chosen balcony strut



Put the mounting-plate back on and tighten the nuts



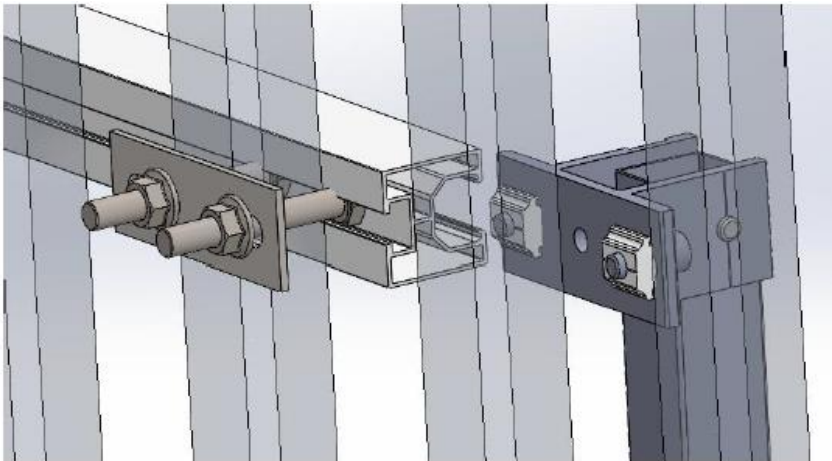
Use two Fixer Sets (I) as pictured above to install the Rail (F)



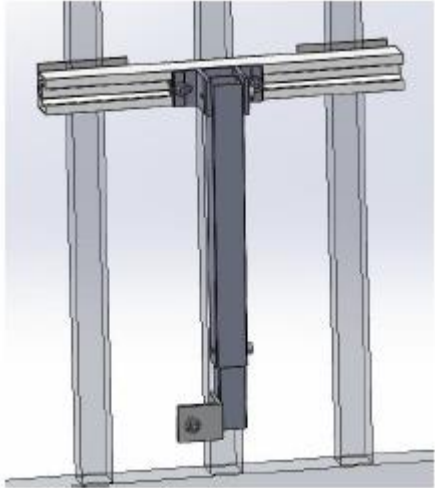
Install the second Rail (F) in exactly the same way as described above

STEP 2

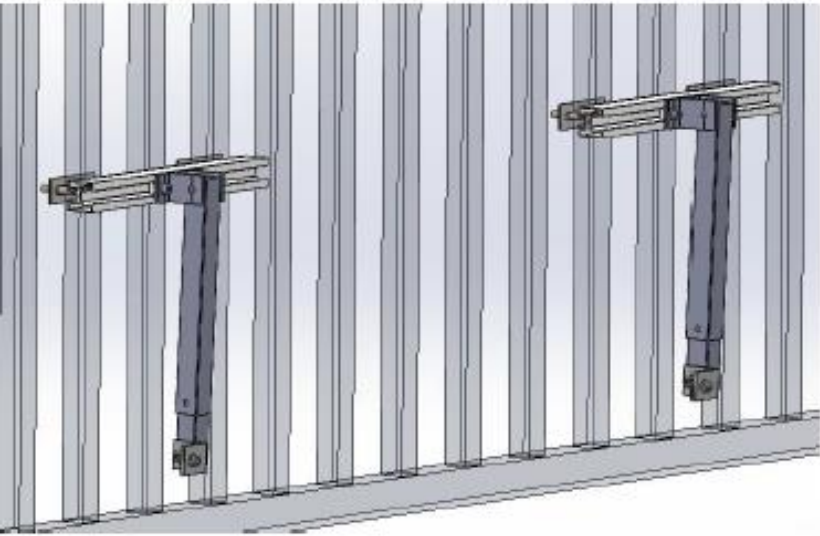
Installation of the adjustable feet (G)



Align the T-shaped block on the base with the opening slot off he beam and slide it into lock

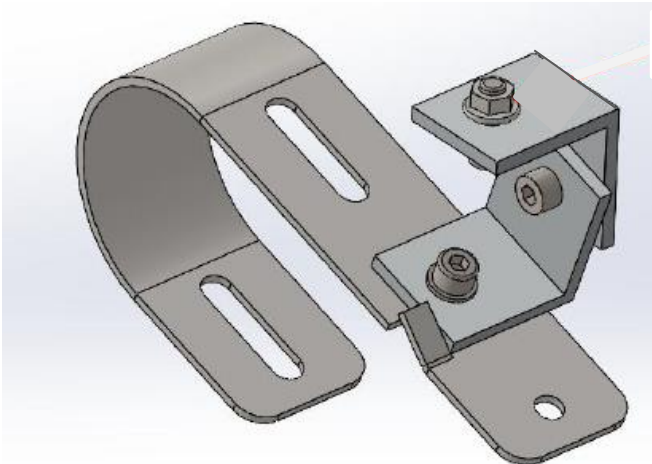
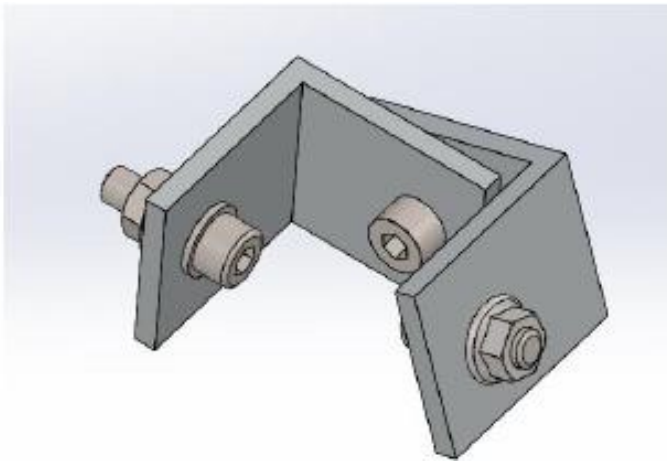


Repeat the above-described step with the second Rail (F)



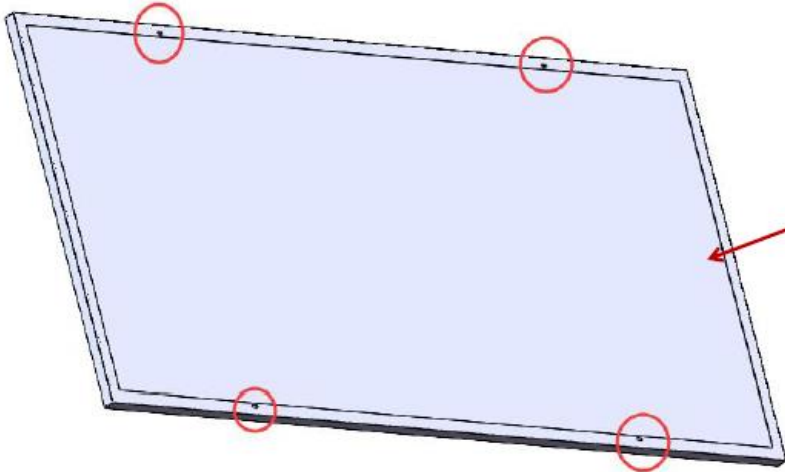
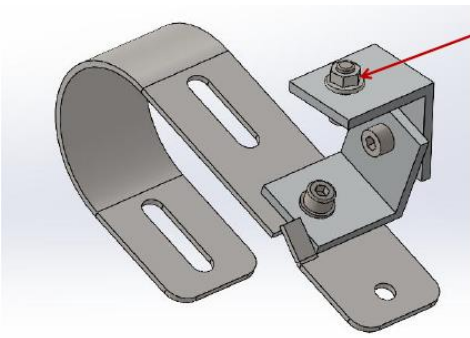
STEP 3

Installation of the hook (E) on the panel

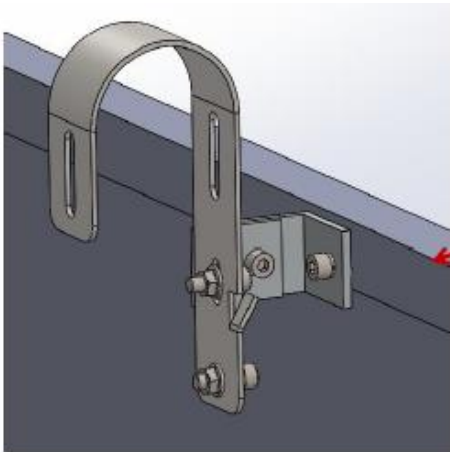


First install the pre-assembled L-angled Bracket-Set (H) on the hook (E) as shown in the picture above

This bolt is intended to secure the panel

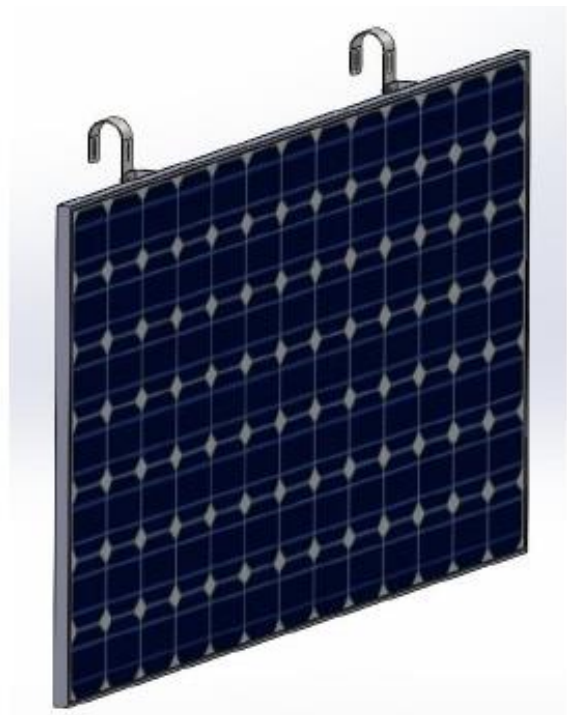
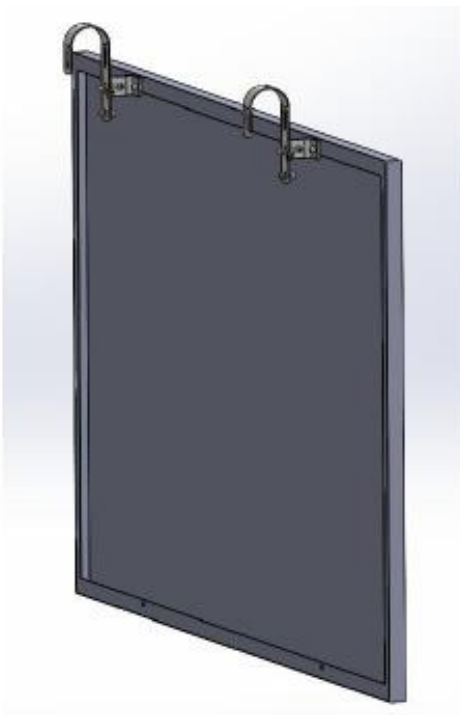


The bolt (see above) goes in the solar panels back keyholes



Solar Panel

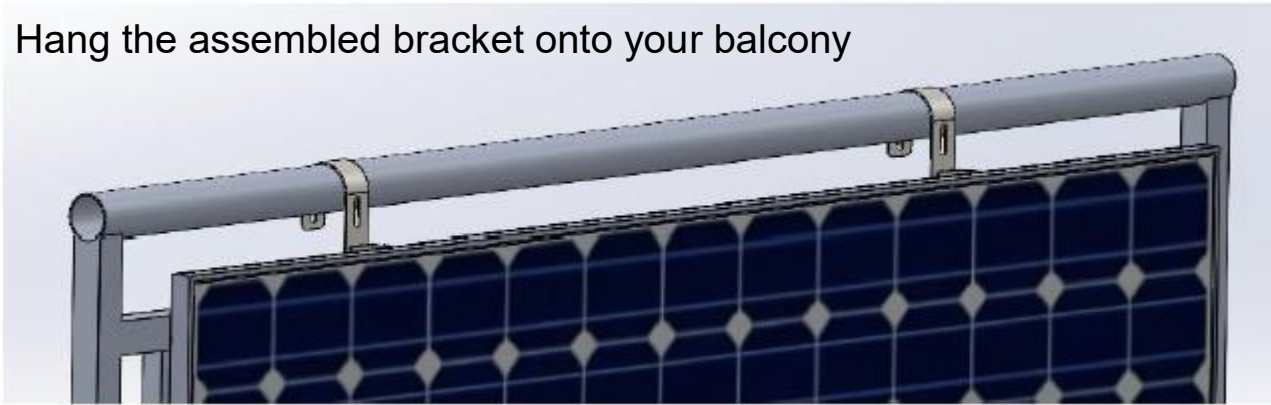
The upper end of the panel is installed as shown in the pictures and fixed with the back lock plate



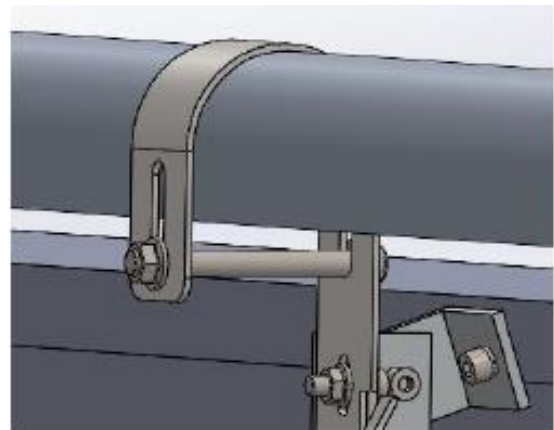
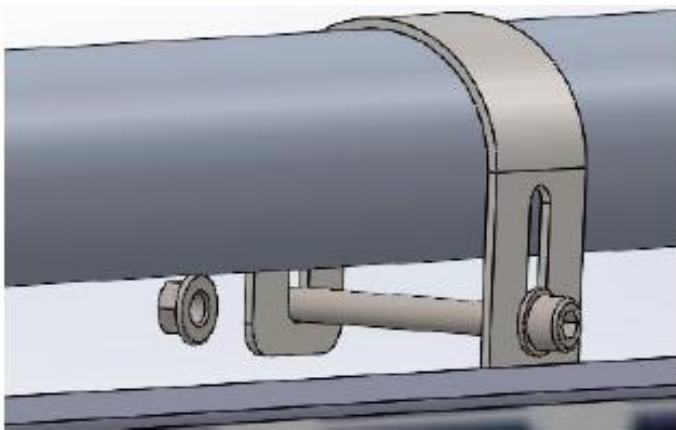
STEP 4

Attachment to the balcony rail

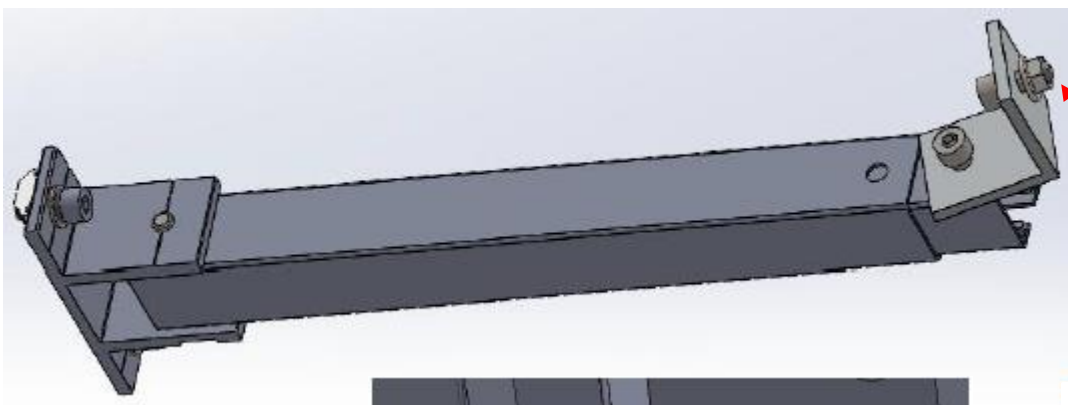
Hang the assembled bracket onto your balcony



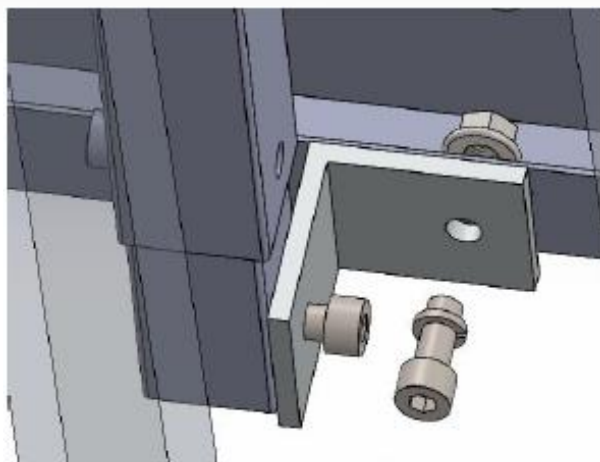
The upper end is fixed with a M12x100 bolt combination

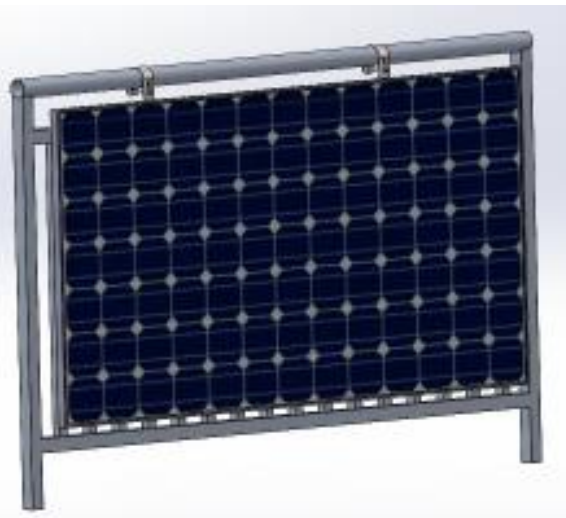


The lower end is fixed with adjustable feet



Use this bolt to secure the panel back hole





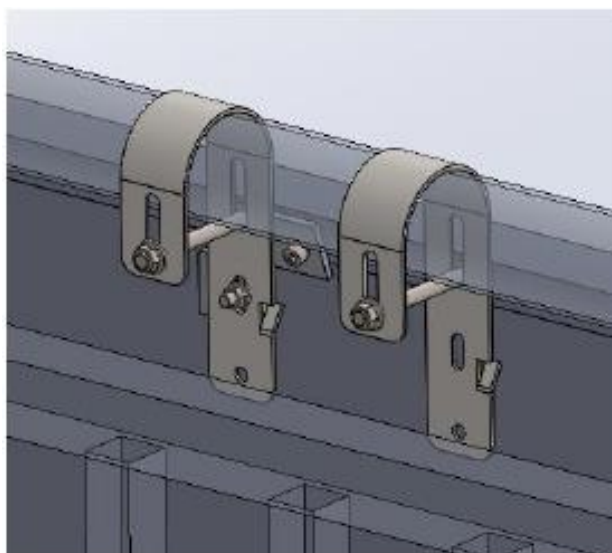
Adjust the length of the adjustable feet according to the requested angle you want to set



STEP 5

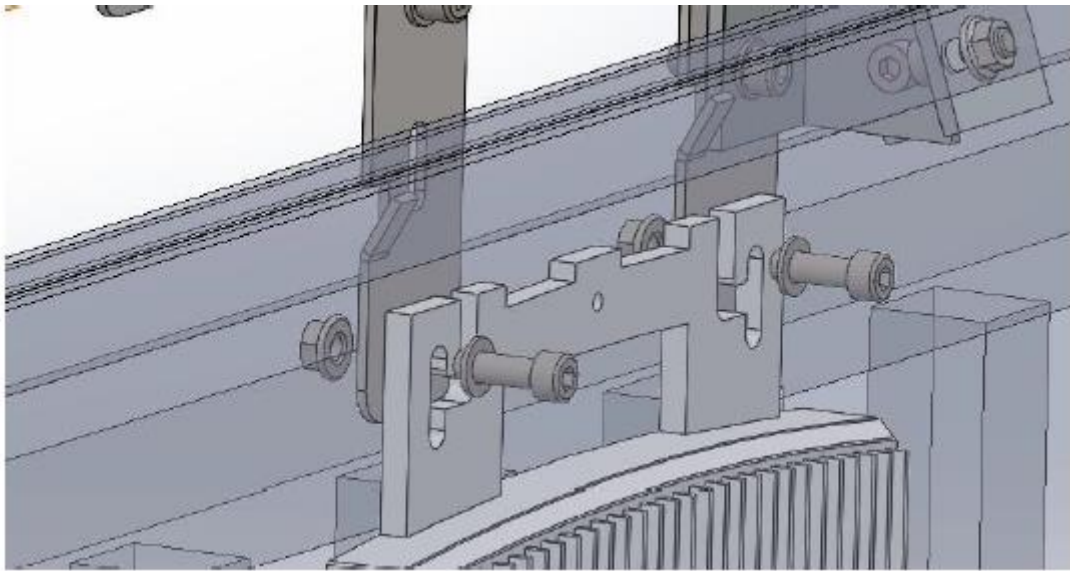
Installation of the inverter

If your plant comes with an inverter, you need to install an additional hook (if not, this step can be left out)



Use two sets of M8x25 bolts to fix the inverter

See additional drawing on the next page



FINISHING INSTALLATION



INSTALLATION PRECAUTION NOTE

Notes on engineering installation dimensions

The specific dimensions involved in the engineering installation shall be subject to the engineering construction drawings. These installation instructions are for the purpose of illustrating how to install the product only.

Precautions when installing stainless steel fasteners

Due to the good ductability of stainless steel, it is essentially different from carbon steel; improper use will cause the bolt and nut to be unable to unscrew after they are mated. To avoid this so called „Deadlock“ please consider the following important aspects:

- **Reduced coefficient of friction:**

1. Ensure that the thread surface is clean (such as no lime sand, sundries)
2. It is recommended to apply water wax or add lubricant (such as butter, 40# engine oil) to the surface during installation

- **Correct method of operation:**

1. It must be screwed perpendicular to the axis of the thread, and must not be inclined
2. During the tightening process, the applied force must be uniform, and the tightening torque must not exceed the specified safe torque value
3. Use torque wrench or socket wrench as much as possible, avoid using adjustable wrench or electric wrench; use electric wrench and try to lower the speed as much as possible
4. Avoid using at high temperature, do not rotate quickly when using, to avoid locking caused by rapid temperature rise; (such as using an electric wrench, etc.)



KBW Trading GmbH
Gewerbering 2
88518 Herbertingen
Germany
Phone: 07586-921160
Fax: 07586-9211616
E-Mail: info@jet-line.de
www.jet-line.de

