



– OPERATION MANUAL –

JET-LINE „POWER SCOOTER“

Article-No.: 2900

185,5 x 69,5 x 112 cm



Installation-videos and further instructions

for all of our products are to be found here

www.jet-line-e-trade.de

User-name: jet-line • Password: user2011

For more products that might be of interest

please click on the following link

<https://jet-line-motors.de>

Product-Code:

2900

Product-Measures:

185,5 x 69,5 x 112 cm

TABLE OF CONTENTS

1. SCOPE OF DELIVERY	Page 2
2. IMPORTANT NOTES	Page 3
3. SAFETY INSTRUCTIONS	Page 4-6
4. START-UP	Page 7-9
• Overview main parts	Page 7
• Key operation and ignition	Page 9
5. CHARGING/BATTERY	Page 9-12
• Lithium batteries charging instructions	Page 11
• Battery recycling	Page 11
6. DRIVING	Page 12-13
• Tacho- / Display	Page 13
7. MAINTENANCE AND CARE	Page 14-16
• Brake maintenance	Page 14
• Tire repair	Page 15
• Cleaning	Page 15-16
8. TROUBLESHOOTING	Page 17
9. CIRCUIT DIAGRAM	Page 18
10. WARRANTY	Page 18



1. SCOPE OF DELIVERY

The following parts belong to the scope of delivery:

- 1 x JET-LINE POWER SCOOTER
- 1 x Operation manual
- 1 x Charger
- 2 x Rearview mirror
- 2 x Battery lock key



2. IMPORTANT NOTES

Please make a note of the vehicle codes of your scooter, chassis number, engine number, number plates and store them with the spare key in a safe place, separate from your vehicle.

The plate with the serial-number is to be found on the right side of your scooter right under the entrance flaps in the middle



This operation manual is valid for the model JET-LINE POWER SCOOTER

Serial number:

Vehicle originally registered on: . .

Order number: _____

Date

Sellers stamp + signature



Your insurance conditions cannot be held responsible for accidents affecting the use of your JET-LINE POWER SCOOTER.

To determine whether or not your insurance covers the scooter, please clarify the details directly with your insurance company (or its agents).

3. SAFETY INSTRUCTIONS



For questions regarding driving license, admission, tax and insurance obligations, please always observe the statutory regulations of the country in which you put the scooter into operation.

For questions regarding helmet duty, the obligation to carry vehicle documents, safety vest, first-aid kit and warning triangle, please always observe the legal regulations (including approval regulations) of the country that you travel by scooter.

- Improper use of the vehicle will void the warranty.
- The scooter is designed for use by driver and passenger for road traffic.
- The permissible maximum speed of 25 km/h respectively 45 km/h must not be exceeded.
- Any intervention to increase the power/speed, as well as „Tuning“ of motor or controllers is unlawful and endangers your own safety. In addition, the operational safety and the life of your vehicle will be reduced and will avoid insurance coverage, the EC Certificate of Conformity (COC) and the warranty.
- Any modification of number plate carrier, lights, audible indicators and of the rear-view mirror are not permitted due to legal regulations and lead to the void of warranty and insurance coverage.
- The modification of the VIN number is subject to criminal and administrative law and the owner is held liable.



This manual describes the functions, operation, maintenance and care of your new vehicle. Please read carefully and follow the instructions to give your JET-LINE POWER SCOOTER a long life and ensure a safe journey.

- Fully charge the battery before driving for the first time
- Make sure your vehicle is street legal
- Wear a helmet
- Always wear suitable (protective) clothing while driving
- Use the vehicle properly
- Maintenance the battery
- Regularly check all screws and nuts
- To avoid electrical short circuits, do not clean the scooter with a water hose
- Minors without adult supervision should not use this product
- Do not use the scooter when it is wet and slippery
- Use only high quality spare parts recommended by the manufacturer.
- Never use the scooter under the influence of alcohol
- Do not use for stunts! Failure to do so will void the warranty!!!
- People with visual impairment, balance, coordination, reflex, muscle or bone

discomfort should not use this product

- Persons who cannot take responsibility for their own actions should not use this product!
- When using the vehicle, the driver assumes all liability and risks associated with the use
- To avoid damage to the engine and footboard, avoid overcharging!
- Avoid unintentional driving by switching off the scooter when not in use
- Do not store batteries near fire or heat
- To avoid battery damage, do not use a faulty charger
- Do not touch the engine or the wheels while driving
- The braking system should slow down or stop the scooter - practice this to safely control and brake the vehicle or stop it
- Service the scooter according to the instructions in this manual
- Check the scooter before every ride. Worn out defective parts must be replaced immediately
- The minimum age to use the vehicle is 16 years
- Your JET-LINE POWER SCOOTER complies with the European Motor Vehicle Safety Act 2002/24 / EC. (GENERAL SAFETY GUIDELINES AND LIMITATIONS)
- It is the responsibility of the owner to read the entire contents of this manual carefully and all laws which are valid for the operation of electric motorcycles in your region. If you have any questions, please contact your local vehicle department.
- These electric motorcycles are not classified as motor vehicles, but different states have different laws to drive them on the roads.
- We have worked hard to provide you with a quality product that is well designed and error-free. That is our responsibility.
- The owner also has his role to play. With proper care and maintenance and attention to motorcycle safety rules, our JET-LINE POWER SCOOTER will give you years of enjoyment.
- Please read the instructions carefully before use. Do not drive the JET-LINE POWER SCOOTER until you have read and understood the operating instructions. It contains important information for your safety. If you have any questions about the operation of this scooter, please contact your authorized dealer. This is of very high importance for your personal safety
- Follow the safety guidelines in this manual to ensure your maximum safety. If you pass your JET-LINE POWER SCOOTER on to someone else, please make sure it is safe also for this person.
- When used, the charge should not exceed the maximum capacity, and be sure to increase the braking distance during rainy or snowy days.
- The scooter can be used in rain and snow, but it can not be submerged in water.
- This will cause short circuits and electrical equipment damage if water enters the rear electronic hub.

- The metal contact on the battery box is positive and electronegative, so it may not be touched with wet hands nor get in contact with any metal, as otherwise this will cause a short circuit
- Please do not disassemble and repair the replacement parts by yourself. If necessary, contact your local dealer or service station.
- The JET-LINE POWER SCOOTER must not be driven by persons weighing more than 200 kg.

Failure to follow the safety instructions may result in electric shock, fire and/or serious injury and consequences. The warranty period for the purchased electric scooter is 24 months after the first commissioning.

4. COMMISSIONING

Overview Main Parts:



You receive your JET-LINE POWER SCOOTER already 95% pre-assembled – the only thing you have to mount are the mirrors (simple rotary thread secured with locknuts).

The JET-LINE POWER SCOOTER uses a throttle grip (on the right side of the handle) to control the speed. Turn the throttle grip toward the seat to increase the speed. If you turn the grip over, the speed slows down.

The higher the speed and the higher the weight, the lower is the maximum range of the electric scooter. The main fuse under the seat protects the entire system from overloading by excessive current flow. 60V DC to 12 DC voltage converters convert the operating voltage to 12V. All lights and lamps use 12V voltage.

The alarm system (if present) is operated with 60V and is triggered by vibrations. Although the alarm system consumes very little power, we recommend turning the safety rocker switch OFF when the vehicle is not going to be used for a long time.



Key operation and ignition

ON / OFF / LOCK switch:

1. Electric scooter is active (ON). Only switch on the scooter when you are ready to drive. Turn it back OFF when you are not driving and remove the key
2. Electric scooter is OFF. When not in use, switch the scooter OFF to save battery capacity
3. Turn the key to this position to lock the handlebar
4. Handlebar is blocked - remove the key



Turn on the engine

- Check if the throttle grip is in the zero position
- Insert the ignition key
- Open the steering lock
- Turn the key
- Note the battery indicator

Hit

- Side and center stand must be folded up when starting
- As soon as the vehicle starts, put your feet on the running board

Stopping/Parking

- Stop the vehicle
- Turn the ignition key to OFF
- Put the vehicle on the side- or main stand when OFF
- Engage the steering lock
- Remove the ignition key

5. CHARGING / BATTERY

BEFORE OPERATING YOUR JET-LINE POWER SCOOTER FOR THE FIRST TIME, FULLY CHARGE THE SCOOTERS BATTERY.

Charge the JET-LINE POWER SCOOTER after each use. When the battery is properly charged, the life of the battery is extended.

Do not use the JET-LINE POWER SCOOTER while the power indicator on the instrument panel is low in energy. If the JET-LINE POWER SCOOTER is used too long, the life-span of the battery will be reduced. The JET-LINE POWER SCOOTER uses a 60V (Volt) battery. To charge the battery, connect the 3-pin connector to the charging socket directly under the front seat. The battery must be charged while installed in the JET-LINE POWER SCOOTER. If you notice something unusual about the battery, like for example, a cracked or leaking battery compartment, a battery that becomes hot during use or charge, a battery case that is „bloated“ or has other battery problems, contact your local dealer. The battery is sealed and can NOT be serviced by the user. Do not attempt to repair, remove, adjust, or otherwise alter any internal or electrical components, controls, or wiring without first consulting a service representative.

The battery can be removed, so the battery can also be charged in the apartment/house. Please open the seat and press the button in the front area of the seat compartment. Then the battery compartment opens under the board. Disconnect the two connectors. **Attention:** Please also pay attention to the direction of rotation (arrows) when disconnecting the plug. Now you can remove the battery. The battery weight is 10.5 kg.



CAUTION: TO AVOID DAMAGE TO THE BATTERY, ONLY USE THE CHARGER, WHICH IS PROVIDED BY THE DEALER!

Be sure to use only 110-230V AC with the JET-LINE POWER SCOOTER charger. Also, make sure that the plug is plugged into a three-pin, grounded outlet.

Plug the POWER INPUT CABLE into the JET-LINE POWER SCOOTER charging socket under the front of the seat (image 1).

Connect the battery charger (image 2) to a 110-230V AC power source.

The charge lamp lights up and confirms that the charger is plugged into the electrical outlet. If the light on the charger does not work, check all connections. If it still does not light up after verifying all connections, fuses, and functioning of your power-plug, unplug the charger and consult your local dealer.



The maintenance and care of the batteries is a crucial criterion for the life of your batteries. Incorrect maintenance, care and charging behavior can reduce this, even lead to irreparable damage and premature failure of the batteries.

Charging instructions for lithium batteries

Lithium batteries should never be deeply discharged, as this causes irreparable damage to the lithium cells. All lithium batteries should (if possible) always be stored at medium charge. If a battery is not needed for a long time, please do not fully charge it before storing, as this puts the lithium cells in unnecessary „trouble“ which may -in the long term- lead to a shortened lifespan. If you have the choice when using the battery, we recommend to generally not charge it to the maximum, but always in the medium voltage range. Of course, the battery can be fully charged, for example, to drive long distances – but from the technical side it is best for a lithium battery not to do so when not necessary to get the maximum performance and lifespan out of the battery.

The lifespan of lithium batteries is stated in charging cycles. It is not correct to believe that you „waste“ charging cycles by recharging the lithium battery more often, when not fully „drained“! The specified lifespan-calculation in charging cycles always concerns so-called “full cycles”. If you discharge your battery by 50% and then fully recharge it you need ½ charging cycle. This means that you can charge twice (by 50%) to spend 1 full cycle.

We recommend recharging a lithium battery with 25% residual charge up to about 75% charge state. Of course, the battery can be fully charged for long distance rides.

During the wintertime or long storage of vehicles with lithium batteries, it is absolutely necessary to recharge them at least once a month to about 60%.

For lithium batteries, use only chargers recommended by the manufacturer. “Quick-Charging” with too high current may cause irreparable damage the lithium cells and in the worst case even set it on fire.

Battery Recycling

When properly maintained and used (in accordance with the guidelines for loading and storage), the battery used in this product will have a normal life. If the battery can not be recharged or charged properly, it should be removed from the JET-LINE POWER SCOOTER and disposed at a **recycling facility**.

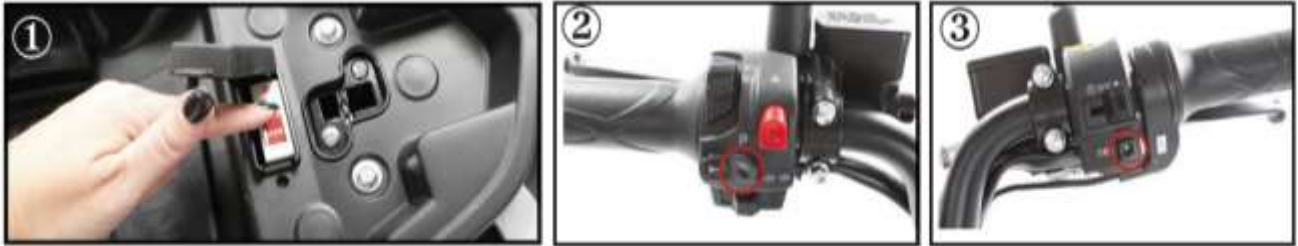
Federal laws prohibit the disposal of batteries in normal household waste.

Please contact your local waste or recycling authority for details on how to correctly recycle batteries in your local area



6. DRIVING

1. After the cable with the negative pole has been screwed to the battery (separate sheet supplied) – one time installation. Turn on the main switch by opening the seat with the key and sliding the black rubber cover aside to flip the switch (image 1)
2. Turn the key to the „ON“ position. If a „P“ appears on the tacho, please press the P-switch on the left side of the handle once (image 2). Slowly turn the throttle lever toward the seat to close accelerate or press the left brake.
3. To prevent losing control of the vehicle, slowly turn the throttle until the speed increases.
4. Do not turn the throttle lever when your are not in the position to drive.
5. To stop, release the throttle and simultaneously apply the front and rear brakes. You can delay by lightly pressing the brakes to start the regeneration mode.
6. To move, release the brakes and slowly turn the throttle.
7. If you want to turn, move the turn signal switch to the left or right, and do not forget to push it back to the middle position to turn it off.
8. The brushless motor produces a minimum level of electromagnetic noise when the throttle is turned. That is normal.



To picture 3 page 45:

The TORQUE / GEARBUTTON is located next to the throttle. Driving on an even road will give you maximum torque/gearshift range when driving with low torque (Economy / Gear1). If you drive on small hills, you reach a maximum speed, than switch to a higher torque by setting to 2nd speed level.

If you are driving up steep hills, you should drive at the 2nd speed level to allow the torque for maximum power.

The range and speed of your scooter highly depend on various aspects like individual driving style and road conditions. A constant speed and fewer stops ensure a longer range. Other factors include tire-pressure, driver-weight, vehicle-condition and battery-charge. Drivers must be careful when driving on bad roads. Always check the battery indicator while driving and make sure the battery is not over-charged too often.

Brakes:

A motorized two-wheeler has a brake force distribution of 80% on the front wheel axle and 20% on the front wheel rear axle.

Speedometer / Display



If a „P” appears on the display, this is the parking position (immobilizer), These can be removed by applying the left brake.

7. MAINTENANCE & CARE

Technological breakthroughs have made the components more complex than ever, and the pace of innovation is increasing.

This ongoing revolution makes it impossible for this manual to contain all the information needed to properly repair and/or maintain your JET-LINE POWER SCOOTER. To minimize the risk of accidents and possible injuries, regular maintenance is extremely important.

For more detailed maintenance instructions or to order spare parts, please contact your Scooter Dealer. Bike repair-services with facilities in your area can also assist you with certain non-electrical repairs or settings that you are not qualified to execute or for which you do not have the required special tools.

The fact that these scooters have no combustion engine, no transmission, no belts, no chains, no clutch, no spark plugs, no carburetor, no petrol and no lubricants means that they basically do not require maintenance. The unique design of the direct drive system and the use of a regenerative brushless motor brake system limit the friction of your scooter to only the two bearings of the front axle and the two bearings in the engine

Maintenance of brakes:

Tighten the nuts on the threaded end of the cable to adjust them. If the brake power decreases, check the brake pads.

If necessary, clean with sandpaper. If the brake pads are worn, replace them.

Check both axle nuts regularly. Make sure you tighten the nuts.

- Check the brake fluid level using the sight glass in the brake fluid reservoir on the handlebar:

Place the vehicle on an even surface on the main stand and swing the handlebar on the Middle position.

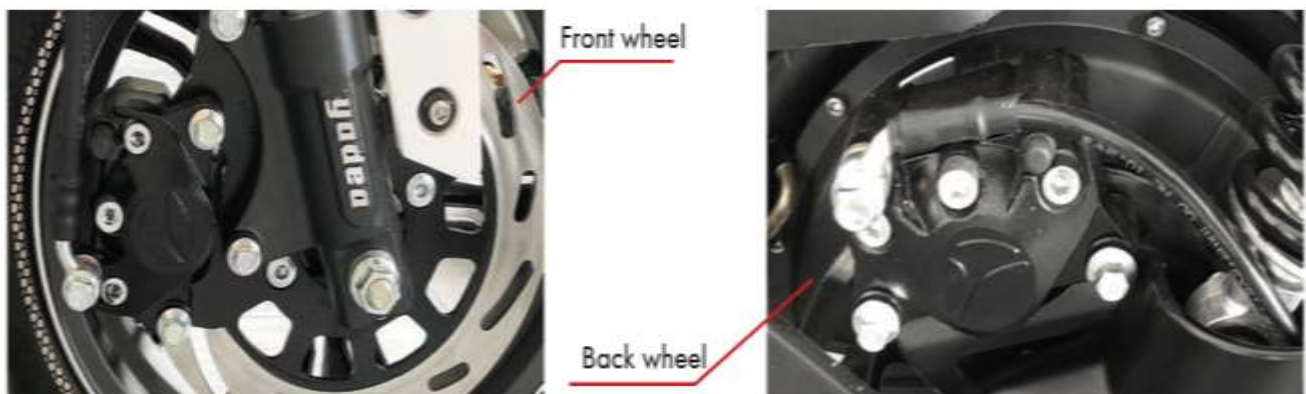
- If the sight glass is completely empty, the brake fluid level is below the minimum. •

In this case, contact a specialist workshop as soon as possible.

- Check the brake disc for scoring and damage.

- Observe the recommended maintenance intervals so that the brake disc and linings are replaced when the limit is reached.

Check the brake line and the brake cylinder for leaks



Tire repair:

Your JET-LINE POWER SCOOTER comes with tubeless tires.

For tubeless tires, we recommend taking a tire repair kit with you to use when the size of the tire puncture allows it. If this is not enough, contact a professional tire repair shop.

WARNING! Do not drive or push your JET-LINE POWER SCOOTER with a flat tire. This will cause the tire beads to come off the rim and possibly bend the rim.

Carefully inspect the inside and outside of the tire for the cause of the puncture and remove any residue or damaging material from the inside or outside of the tire.

WARNING! IF THE TIRES ARE DEFECTIVE, YOU MUST REPLACE THEM TO AVOID ACCIDENTS THAT CAN CAUSE SERIOUS INJURY, OR DEATH.

Spare parts can be purchased from your local scooter dealer.

Cleaning:

Please never wash with a water hose!

In order to reliably prevent rust, it is advisable to thoroughly clean and dry the vehicle after driving in the rain.

Use of rust preventive care products is strongly recommended.

- Use suitable cleaning and care products and a soft sponge.
- Never use solvents.
- Never direct a water jet to any of the following components: Headlight, switch on the handlebar, brake lever, ignition lock, bearing hubs of the front wheel and the engine, battery, charger
- After washing, rinse with clean water to remove any cleaning residue.
- Dry with a leather cloth.



DANGER:

When outside temperatures are around the freezing point, please always make sure that all rope and brake cables are in perfect working order.

AFTER CLEANING

Carry out some braking operations with extreme caution in a traffic-proof place. Water on the braking surfaces reduces braking power in the short term.

Please keep your JET-LINE POWER SCOOTER away from sun and rain.

Regularly check the screws and small parts on your scooter.

Do not use alcohol, gasoline, acetone or other chemical solvents to clean the scooter as it could corrode otherwise. Pay attention to regular maintenance and inspection of the individual parts.

MAINTENANCE SCHEDULE

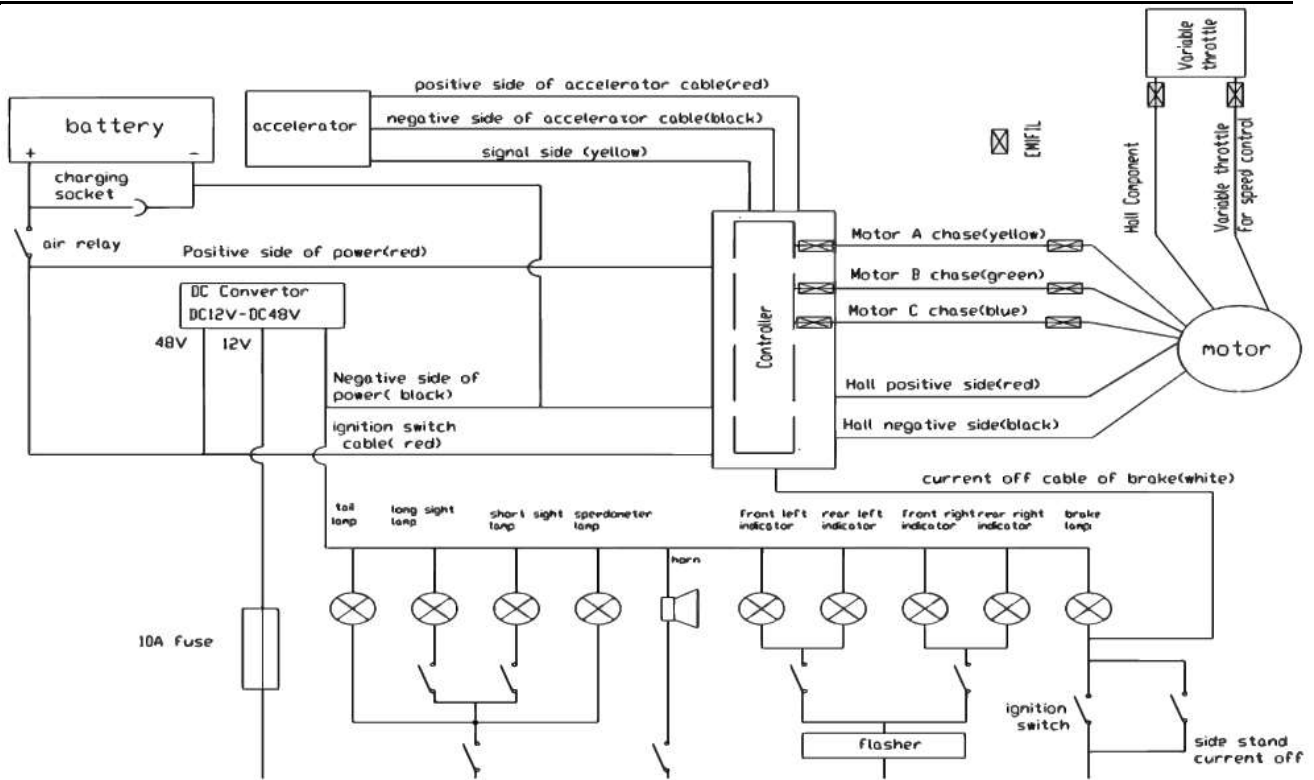
Check ● To adjust ○ Lubricate △ Replace as needed ▲

Maintenance part	Check	Daily	Every 60 days	Every 180 days
Handlebars Throttle	Check that rotating and steering parts of the handle are loose or worn. Check the throttle lever condition in case of malfunction.		● △	
tire	Check that it has no cracks.	●		
rims	Check if the rim swings or is warped. Clean the dirt if it is frayed.		●	●
transmission	Check if the transmission oil has been replaced.		●	●
brake	Check if the brake is good. Check the brake function to prevent accidents due to brake malfunctions.	●	● ○	● ○
horn	Check if the horn sounds good.	●		
charger	Check that the charger and the cables are worn. Input and output plugs should be in good condition.	●		
shock absorber	Check that the charger and the cables are worn. Input and output plugs should be in good condition.		●	
battery	Check the appearance and the battery power, and make sure that the wiring is still reliable.	●		
screw	Check the screws in the main parts if they are loose.	●		
Electric wire	Check if the cables are loose or broken in case of cable clutter.	▲		
clean	Keep the surfaces of the scooter in a clean condition.	●		

8. TROUBLESHOOTING

Error	Problem	Solution
Cant be started	<ul style="list-style-type: none"> (1) low voltage of the battery (2) bad connection between battery box and socket (3) Power lock switch is not in the correct position 	<ul style="list-style-type: none"> (1) Charge the battery (2) clean the dirt on the contacts (3) turn to the correct position
The speed setting is not possible or the maximum speed is relatively slow	<ul style="list-style-type: none"> (1) low voltage of the battery (2) bad connection between battery box and socket (3) Power lock switch is not in the correct position 	<ul style="list-style-type: none"> (1) Charge the battery (2) Clamp must be fastened (3) visit a repair shop.
Motor does not run after switching on	<ul style="list-style-type: none"> (1) Wire connection is loose (2) Magnetic steel in the speed adjusting handle is loose (3) The power cable connector is loose or damaged 	<ul style="list-style-type: none"> (1) Charge the battery (2) Clamp must be fastened (3) visit a repair shop.
Reach is not enough after a charge	<ul style="list-style-type: none"> (1) not charged enough or charger error (2) too much slope, strong headwind, quite often brake, big load (3) Deep discharged battery, and do not charge in time, the battery ages or is damaged (4) Low winter temperatures affect range 	<ul style="list-style-type: none"> (1) fully charge or check the connections (2) Walk on foot in these circumstances (3) Change the battery (4) We advise you to load longer in
Charger does not charge	<ul style="list-style-type: none"> (1) The charger plug fails or is loose between the plug and the outlet (2) blown fuse in battery box (3) Wire connection of the battery fails 	<ul style="list-style-type: none"> (1) tighten the socket and the plug (2) change the fuse (3) Welding of the bonding wire
The electric wheel has a strange sound	<ul style="list-style-type: none"> (1) Abrasion of the engine mount (2) large deviation of the wheel or deform 	<ul style="list-style-type: none"> (1) change the bearing (2) adjust the rim or replace the wheel with rim.

9. CIRCUIT DIAGRAM



10. WARRANTY

We thank you for choosing the JET-LINE POWER SCOOTER.

You have a legal warranty on your scooter from the date of purchase.

Please note that there is no warranty if:

1. the warranty period has expired.
2. you have no invoice and your order has not been recorded in the system.
3. the JET-LINE POWER SCOOTER was not used properly.
4. technical changes have been made to the JET-LINE POWER SCOOTER.
5. the JET-LINE POWER SCOOTER was stored improperly.
6. the JET-LINE POWER SCOOTER was damaged by an accident.
7. a non-original charger was used.
8. the JET-LINE POWER SCOOTER has been damaged by water contact.
9. the JET-LINE POWER SCOOTER was used in extreme temperatures.
10. no original replacement and / or accessories were installed

The warranty does not cover wearing parts such as tires and brake pads.

Installation-videos and further instructions

for all of our products are to be found here

www.jet-line-e-trade.de

User-name: jet-line • Password: user2011

For more products that might be of interest

please click on the following link

<https://jet-line-motors.de>



KBW Trading GmbH
Gewerbering 2
88518 Herbertingen
Deutschland
Tel: 07586-921160
Fax: 07586-9211616
E-Mail: info@jet-line.de
www.jet-line-e-trade.de

