

Massage Bathtub

Instructions of Installation and Use

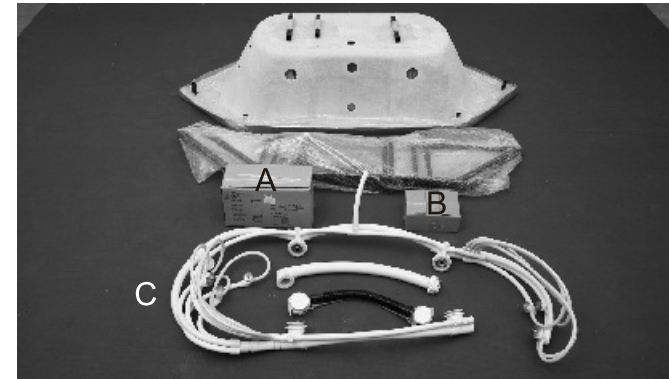


MT-HX2101

Dear Customer,
Thank you for choosing our product. For your safe concern, please take a few minutes to read this manual before installation and use.

WARNING

1. For a person who has heart trouble, high blood pressure & sugar diabetes should not take a steam shower or bath when feeling sick. (The kid is suggested to be accompanied by an adult when taking a bath)
2. Don't take a bath alone after drinking wine with alcohol or excess sports.
3. The water temperature should be below 45°C during shower and the recommended temperature is 30°C-38°C.
4. Don't take a bath for a long time. Recommended time: 15-21minutes.
5. All the information in this instruction are subject to change without prior notice.
6. Settings, configurations and details of the products are subject to be changed or upgraded without prior notice.
7. For the maintenance, please contact the technicians appointed by the dealer and don't disassemble and fix by yourself, or the supplier will be free from any consequences that may occur.



Six packages in total as pic shown: tub, Accessory box A, B,C, short frames and long frames.

A:

Water Pump	1pc
Rubber Underlay	1pc
Underwater Light	1pc
Power Switch	1pc
Volume Control	1pc
Air Pipe	1pc
Water Jet Cover	5pcs
Waterback Cover	1pc
Screw M40x10mm	10pcs
Screw M8x50mm	5sets
Screw M6x15mm	20sets

B:

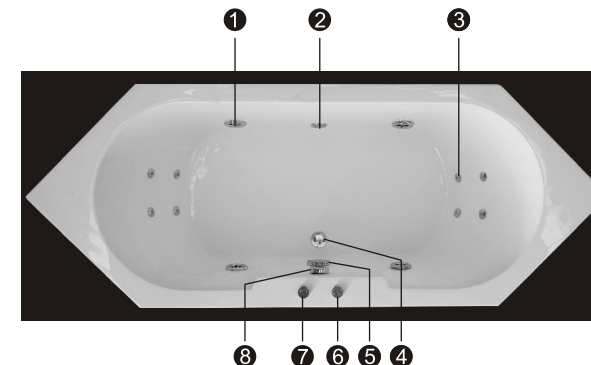
Acrylic Skirt Installation Accessory:	
Connector	8pcs
Screw M4x30mm	22pcs
Screw M8x50mm	8pcs
Wooden Skirt Installation Accessory:	
"L" shaped Connector	8pcs
Screw M4x30mm	16pcs
Screw M8x50mm	8pcs
135°Corner Connect Metal Slice	4pcs
Self-drilling Screw 4x15mm	34pcs

C:

Carton:
Water Jet Pipes.
Waterback Pipe and Drainer Pipes

MODEL: MT-HX2101

SIZE: 2100mmX800mmX610mm

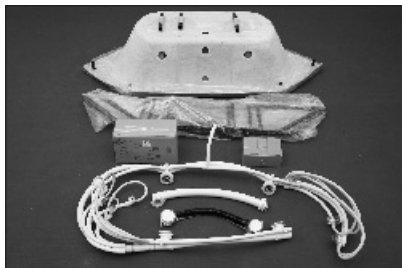


- ① Big Water Jets
- ② Light
- ③ Small Jets
- ④ Drainer
- ⑤ Water Circulation
- ⑥ Volume Control
- ⑦ Surfing Switch
- ⑧ Drainer Switch

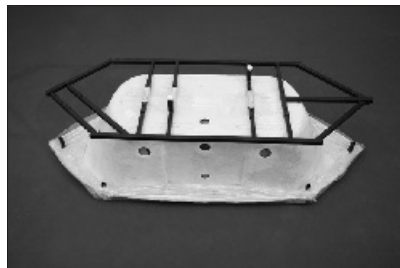
CONTENTS:

Preparations _____ Page2

Installation Process _____ Page3



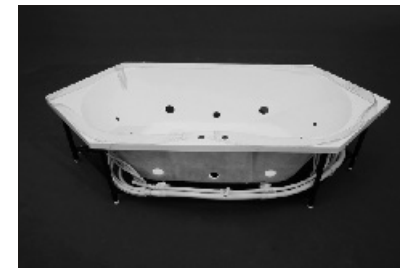
1. Open the packages and put all the accessories together.



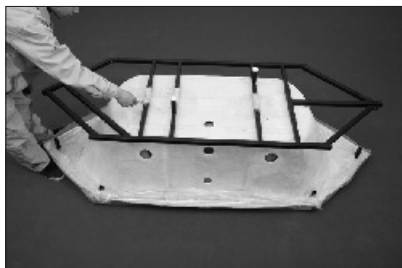
2. Insert the iron frames to the fixed tube from left and right side as pic shown.



7. Put the tub on the floor as pic shown.



8. Fix the pipes on the tub.



3. Adjust the two ends of frames.



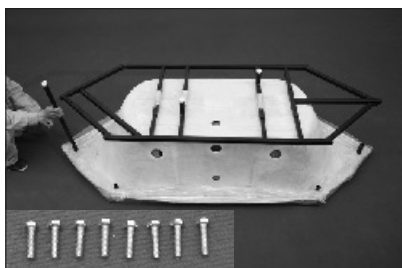
4. Make sure put them in the middle.



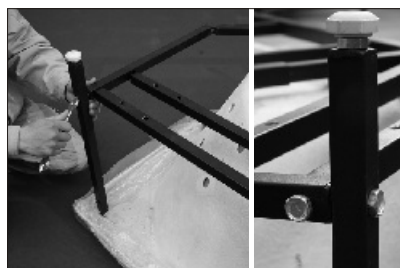
9. Loosen the small water jet from pipe connector.



10. Seal with silica gel around the small water jet .



5. Use the cross-shaped screwdriver to fix the middle frame with M6x15mm screw.



6. Fixed the two end frames as pic shown.



11. Insert the small water jet to the tub and seal with silica gel around it from back side.



12. Fix the water pipe connector to the small water jet.



13. Tighten the small water jet with Allen key.



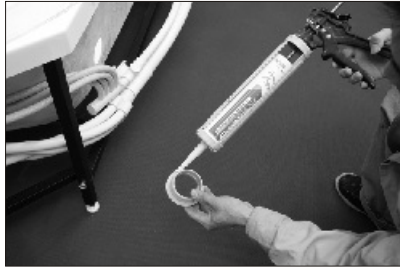
14. Connect all the small water jets to the pipe connectors.



19. Tighten the big water jet with a special spanner.



20. Put on the big water jet cover.



15. Loosen big water jet from pipe connector and seal with silica gel around the jet.



16. Insert the big water jet to the tub.



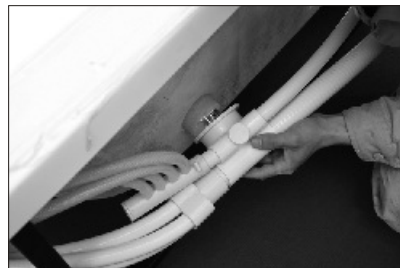
21. Put the cover on like pic shown.



22. Seal with silica gel around the underwater light.



17. Seal with silica gel around the big water jet from backside.



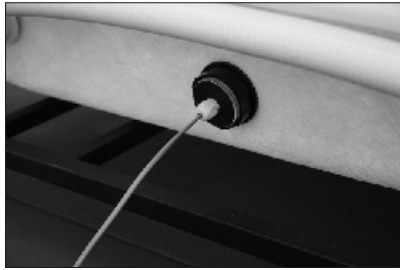
18. Fix the water pipe connector to the big water jet.



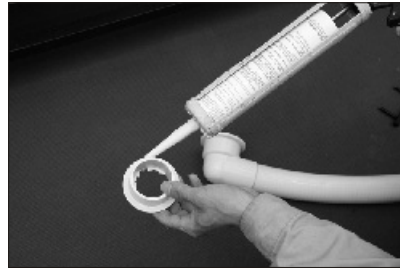
23. Insert the light to the tub.



24. Seal with silica gel around the light from backside.



25. Put on the screw nut from backside. Tighten the screw nut.



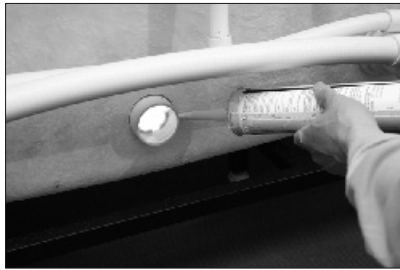
26. Seal with silica gel around the waterback .



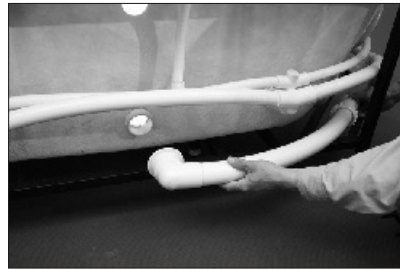
31. Loosen the screw nut of volume control button and insert it to the tub as pic shown.



32. Tighten the screw nut as pic shown.



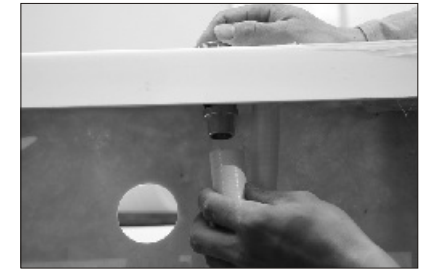
27. Insert the waterback to the hole. Seal with silica gel around the waterback from backside.



28. Connect one end of the short pipe connector to the waterback from backside.



33. Seal with silica gel around the inner of pipe connector.



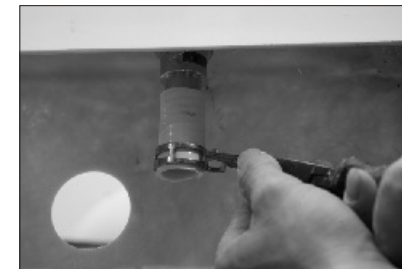
34. Fix the connector to the button.



29. Put on the waterback cover.



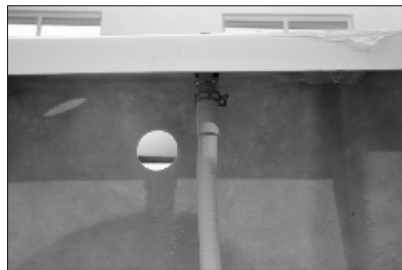
30. Make the waterback cover like pic shown.



35. Tighten the pipe connector as pic shown.



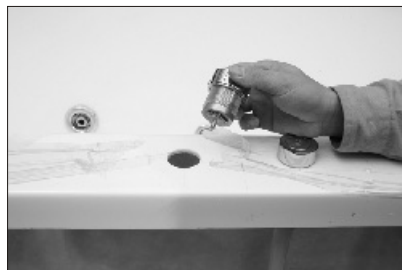
36. Seal with silica gel around inner of pipe connector from below end and outer or pipe from top end as pic shown.



37. Fix the pipe to the pipe connector as pic shown.



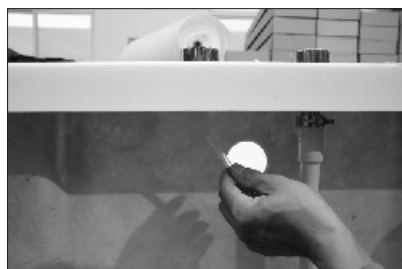
38. Make sure the pipe and button is well-connected as pic shown.



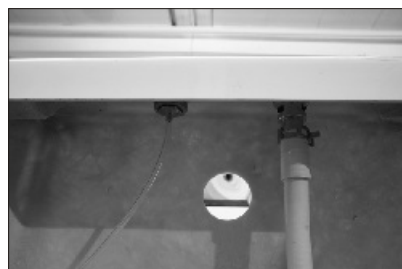
39. Loosen the screw nut from power switch and insert the power switch to the tub as pic shown.



40. Tighten the screw nut as pic shown.



41. Connect one end of long air pipe to the power switch.



42. Tighten the air pipe as pic shown.



43. Put the overflow drainer on the clean floor.



44. Take off the drain plug as pic shown.



45. Take off the drain cover as pic shown.



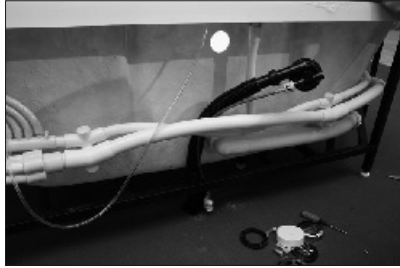
46. Loosen the switch handle with screwdriver as pic shown.



47. Take off the switch cover.



48. Take off the cover connector and put them together .



49. Let the overflow drainer near the tub.



50. Seal with silica gel around the drainer as pic show and make sure no silica gel left inside of the drainer.



55. Make sure the drain plug in the middle as pic shown.



56. Insert the handle end of the drainer to the hole.



51. Insert the drainer end to the hole from back side.



52. Put the drain cover from front side into the drainer and make sure the right direction.



57. Tighten the cover connector.



58. Put the switch cover on it with right direction.



53. Tighten the screw with spanner.



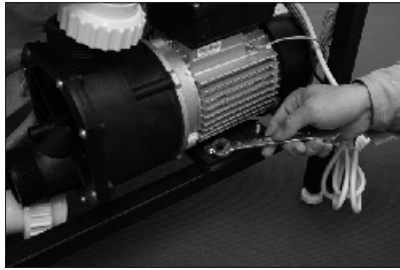
54. Insert the drain plug after tighting the screw.



59. Tighten the screw.



60. Fix the water pump to the frame with M6x40mm screw as pic shown.



61. Tighten the screw with cross shaped spanner.



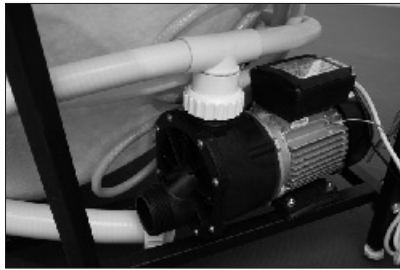
62. Connect the main water pipe to the pump.



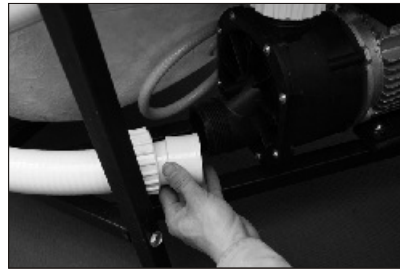
67. Insert one end of air pipe to the control box as pic shown.



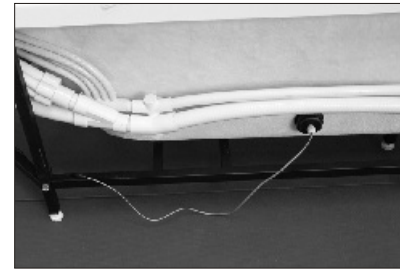
68. Connect the light to mated line from control box.



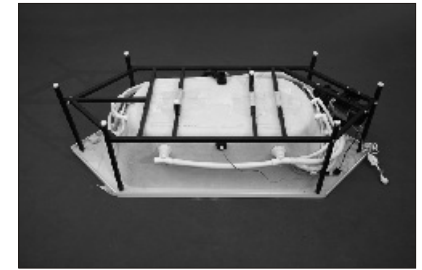
63. Tighten the main pipe to the water pump as pic shown.



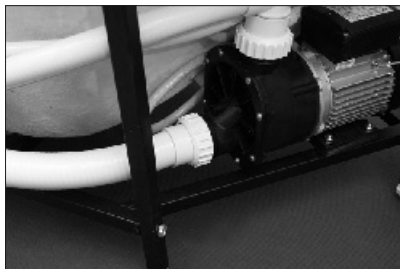
64. Connect one end of waterback pipe to the water pump.



69. Make sure the line is well-connected.



70. Finish all the installation.



65. Tighten the waterback pipe as pic shown.



66. Connect the other end of air pipe to the control box.



1. Single package of the skirt.



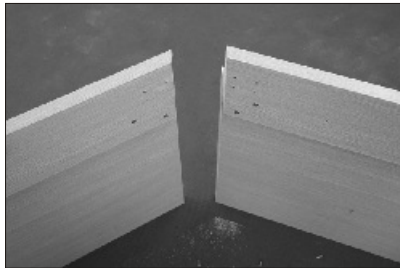
2. Open the package to check the whole skirt.



7. Put the protection foam on the floor then side up the tub, put on the whole skirt.



8. Use adjustable spanner to fix the "L" shape connector on the iron frame.



3. Open the package and put different parts on the floor.



4. Connect two parts with metal slice.



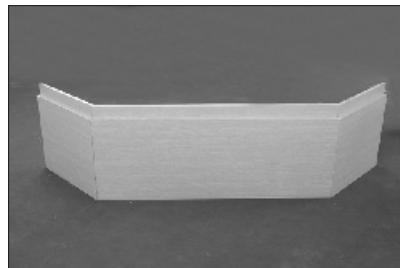
9. Use spanner to fix the plastic connector to the skirt.



10. Fix one side of "L" shaped connector to the tub edge.



5. Tighten the screw to connect the two parts as pic shown.



6. Put the whole piece on the ground as pic shown.



11. Tighten the screw to make sure the "L" shaped connector connects well.



12. Finish the installation of skirt.

PRECAUTIONS:

1. The installation should be carried out by a qualified technician and creepage protector should be installed in the place easily to be controlled.
2. The electronic parts should be well grounded, otherwise, the manufacturer will not be liable for any loss or consequences occurred.
3. The load capability of the power supply should be considered during installation, or it affects the normal operation of the product or may lead to accident!
4. For any functions can not be activated through the ways mentioned above, please contact a certified technicians or local dealer.
5. If you don't use the product for a long time, please disconnect the main power supply.
6. Parts containing live parts, except parts supplied with safety extra-low voltage not exceeding 12V, must be inaccessible to a person in the bath.
7. Earthed appliances must be permanently connected to fixed wiring.
8. Parts incorporating electrical components, except remote control devices, must be located or fixed so that they cannot fall into the bath.
9. The appliance should be supplied through a residual current device (RCD) having a rated residual operating current not exceeding 30mA.
10. Make sure that the wire is laid correctly.
11. Make sure that the equipotential connection is done correctly.
12. The means having a contact at least 3.0mm separation in all poles that provide full disconnection must be incorporated in the fixed wiring in accordance with the wiring rules.
13. If the supply cord is damaged, it must be replaced by the manufacturer, its service agent or similarly qualified persons in order to avoid a hazard.



Earthing Marking



Equipotential



Switch Marking

1. During the transportation or installation, do not pull the pipe or hold accessories to avoid the water leakage.
2. After long time use, if there are some dirt on product's surface, wipe it off gently by a soft towel stained with mild detergent; for the metal parts, polish it with some car wax by a towel, which brings out a refreshing appearance.
3. Scale deposit can be wiped off with warm citric acid or vinegar by a soft cloth.
4. Don't clean the tub and accessories with hard or coarse material to avoid any scratches.
5. Don't clean the tub and accessories with gasoline to avoid any damages.
6. It is not recommended to leave water in the tub for a long time or use this tub for washing purpose. Pls drain off the water after the bath and disconnect the power supply.
7. There should be sufficient power supply and wires should be safely grounded.
8. For your safety, a professional technician is necessary to ensure earthing wire be well grounded and a RCCB fitted during installation.